



# Highcliffe School Student Bulletin

Monday 21<sup>st</sup> - Friday 25<sup>th</sup> January 2013: **Week B**

**Thought For The Week:** *Opportunities multiply as they are seized - Sun Tzu*

## Literacy Focus: Horrible Homophones

When checking your spellings, homophones are a good place to start. Which is correct in the following?

1. "I don't no" OR I don't know. *How can you help yourself remember which is the correct one?*
2. "I'm going to write a letter" OR "I'm going to right a letter." *How can you help yourself remember the correct one?*



Please can any students who have not yet returned their **Big Walk sponsor money** take it to the finance office as soon as possible. Our current total stands at £12,300 which is a great achievement but we would like to get all the money pledged in so it can be distributed amongst the nominated charities. Ms Kennedy.

**A message to all year groups:** The **Mary Glasgow MFL magazines** are now ready to collect from the Library. If you subscribed, please collect your magazine from Mrs Nagel-Smith as soon as possible.

**Year 8 Launchpad program (careers guidance):** Following on from the presentation in assembly last week, please find the Launchpad program on the online resources pages of your My Highcliffe. If you click on it you will see the licence code (**tipsinfo69**) that you need to type in to create a user account. Once you have created an account you can explore the site to identify your skills, find out about different GCSE courses, and more importantly access the huge range of information about different careers. Please use the program to find out about the range of jobs in a variety of career sectors that you may not have even considered or heard of, or find out what qualifications certain jobs need and what you can earn. All this independent research forms part of your valuable careers education that can help you make future choices.

**Year 10/11 WRL students and GCSE Science exam:** Please could the students following WRL programmes be aware that although they will be going to their courses straight after the Science exam (Year 11 on Tuesday and Year 10 on Thursday), they must be in **FULL SCHOOL UNIFORM** for the exam. They can change when they come out of the exam.

**Year 10 Science Exam - Tuesday 22<sup>nd</sup> January (am):** Please remember for your exam that you will need **BLACK** pens, pencil, ruler and a **CALCULATOR**. **DO NOT** bring your mobile phone or any other electronic device with you as these are not permitted in the exam hall. The exam is 1 hour and 15 minutes long so you will need to line up in the seating plan at 8.45am. If you have any questions before the exam, please see your science teacher. Good Luck!

**Year 11 Science Exam - Thursday 24<sup>th</sup> January (am):** Please remember for your exam that you will need **BLACK** pens, pencil, ruler and a **CALCULATOR**. **DO NOT** bring your mobile phone or any other electronic device with you as these are not permitted in the exam hall. The exam is 1 hour and 15 minutes long so you will need to line up in the seating plan at 8.45am. If you have any questions before the exam, please see your science teacher. Good Luck!



**Dance Club: Years 7 and 8** - After-school Thursdays (3.15pm - 4.15pm) - Starts this week in the Dance Studio - come along and have fun learning new dance routines this term. Bring your PE kit! See you there, Miss Barrett and Mrs Wills!

**BTEC Acting theatre trip Tuesday 22<sup>nd</sup> January:** Students in Year 12 and 13 who are attending 'The Woman in White' at Poole Lighthouse should meet in the foyer of the theatre between 7.00pm and 7.15pm. There will also be an after show talk with the actors which will last approximately 20 minutes. Mrs McGrath

**Year 11 Expressive Arts moderation 23<sup>rd</sup> January:** A group of Year 11 students are required to take part in this moderation in the Performance Hall. They will be needed from 9.00am at least until lunchtime and possibly in the afternoon subject to the visiting moderator.

**Year 10 Maths Unit 2 revision: Tuesday 3.05pm - 4.05pm.** In the maths huts, posters will be up to say which rooms to go to!

Unit 2 Higher	Unit 2 Foundation
Session 1: Tuesday 22 <sup>nd</sup> January 2013 <b>Percentages, Fractions &amp; Decimals: Standard Form &amp; Surds</b>	Session 1: Tuesday 22 <sup>nd</sup> January 2013 <b>Fractions, Percentages &amp; Decimals</b>
Session 2: Tuesday 5 <sup>th</sup> February 2013 <b>Algebra</b>	Session 2: Tuesday 5 <sup>th</sup> February 2013 <b>Algebra</b>
Session 3: Tuesday 13 <sup>th</sup> February 2013 <b>Graphs</b>	Session 3: Tuesday 13 <sup>th</sup> February 2013 <b>Sequences &amp; Graphs</b>
Session 4: Tuesday 26 <sup>th</sup> February 2013 <b>Angles, area, volume, surface area &amp; circle theorems</b>	Session 4: Tuesday 26 <sup>th</sup> February 2013 <b>Angles; Perimeter, Area, Volume, &amp; Surface Area</b>

**Year 7 French students:**

Our school is taking part in

# Linguatrivia

## Language Competition

Thousands of prizes to win  
(laptop, games consoles, IPods, camera...)

Every participant will receive a certificate and a prize!  
For more information and to practise online, visit:

[www.Linguatrivia.com](http://www.Linguatrivia.com)

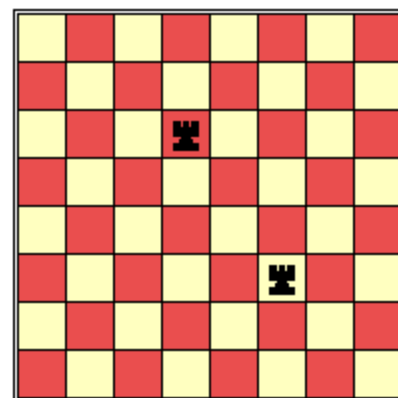
Please speak to Mr Wayth for further information.

## Numeracy Challenge:

How Many Squares?

How many squares, of any size, can you find on this chess board which do not contain a rook?

*Answers to be placed in the box in MA7 by 1.20pm on Friday 1<sup>st</sup> February.  
The first correct answer drawn will win a prize!*



*I WONDER ... Is there more happiness or sadness in the world?*

# PE DEPARTMENT

## EXTRA-CURRICULAR ACTIVITIES

**PLEASE CHECK PE WHITEBOARD FOR CHANGES OF FIXTURES & CLUBS**



	LUNCHTIME	AFTER SCHOOL
MONDAY	1.25pm - 1.55pm	3.05pm - 4.10pm Girls' U16 Football vs Twynham (H) (CFM)
TUESDAY	1.25pm - 1.55pm Year 10/11 Fitness Club (NJS)	3.05pm - 4.10pm Year 7/8 Girls' Football Club (CFM) Year 7 Football vs Arnewood (H) (AWG) Year 10 Football vs Arnewood (A) (NJS)
WEDNESDAY	1.25pm - 1.55pm	3.05pm - 4.10pm Netball Club (MWR/LSN) Year 9 Football vs Arnewood (A) (NJS)
THURSDAY	1.25pm - 1.55pm Year 10/11 Fitness Club (NJS)	3.05pm - 4.10pm Year 8 Football vs Arnewood (H) (JPO) Year 11 Football vs Arnewood (A) (SHM)
FRIDAY		